



# OpenSquare

Glazing + Design



## OS25 CorVision Plus Sliding Doors By OpenSquare

Sliding door with slim vertical sightlines and improved thermal performance

### Applications

Sliding Panes 1, 2, 3, 4, 5 & 6  
Tracks 1, 2 & 3  
Opening Corners 90  
Pocket Doors

### Technical Performance

Uw Value	0.9w/m <sup>2</sup> K
Air Permeability	Class 4 (EN 12207:2000)
Water Tightness	Class 9A (EN 12208:2000)
Wind Resistance	Class C3 (EN 12210:2000)

*(Based on 1230mm x 1550mm – 1 sliding & 1 fixed pane)*

Glass	54mm
Typical Sightlines	25mm

### Recommended Size Limits

Max. Pane Width	4000mm
Max. Pane Height	4000mm
Area	14m <sup>2</sup>
Max. Pane Weight	400kg (manual)   700kg (automated)

### Finishes

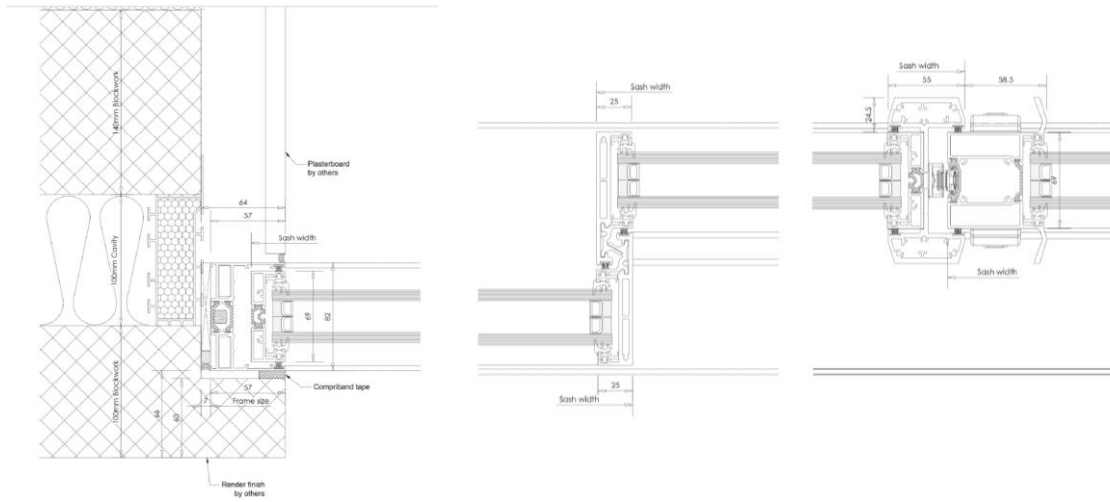
Polyester powder coat to any RAL colour  
*(Dual colour available)*



OpenSquare  
Glazing + Design  
[www.opensquareglazing.com](http://www.opensquareglazing.com)

# Two Track System

## Typical Section Details



## Horizontal Section



3D View



Integrated Handle & Lock 36 x 260mm



# Example Configurations

Available Options

